



### Foreword by Lady Smith

During the first quarter of 2024, SCAI has made further excellent progress. We have, in the period since September 2023, completed five chapters of hearings in relation to Phase 8 of our investigations, during which we have covered the evidence of 320 witnesses. The focus of Phase 8 is the residential care of children provided by or for the state between 1930 and 2014 to accommodate young offenders under the age of 18, children and young persons under 18 awaiting trial, and children and young persons under 18 in need of care and protection. A range of organisations were involved in the provision of such residential accommodation, including local authorities, religious and voluntary organisations, and the Scottish Prison Service.

Chapter 5 of the case study is almost complete. It has involved the examination of establishments for the residential care of children run by CrossReach. Chapter 6, examining Dr Guthrie's Schools and Loaningdale School, is due to start in late May.

In March 2024, I published the second volume in the set of findings in relation to the boarding schools case study provision – Morrison's Academy. Findings in relation to Gordonstoun are complete and will be published soon.

Towards the end of 2023, I announced the next phase (Phase 9) of our investigations, concerning the provision of residential care in establishments for children and young people with long-term healthcare needs, additional support needs, and disabilities. It is expected that public hearings will commence in spring 2025. A video is available [here](#) on our website where I explain more about this case study.

We have continued to further improve the accessibility of our website by adding a series of British Sign Language (BSL) guides and an easy read information booklet. You can read more information about these later in this newsletter.

Meanwhile, anyone who requires additional support to give evidence to the Inquiry should get in touch with our Witness Support Team who will be able to assist. I would like to extend my thanks again to all who have provided and continue to provide valuable evidence to the Inquiry.

I am fortunate to have such a dedicated team of counsel and staff supporting me in our important task. However, with great sadness, I have to advise of the untimely death of Jane Rattray, Advocate. She was appointed as a junior counsel to the Inquiry in late 2016 and had been engaged in Inquiry work since then. Jane worked on a number of case studies including Quarriers, Aberlour and Barnardo's; Scottish Government; foster care; and, most recently, Chapter 1 of our current case study, establishments run by the Scottish Prison Service. She was also working on the preparation for Phase 9, our case study examining the provision of residential care for children with health and additional support needs, and disabilities. I will remain ever grateful for Jane's valuable and very significant contribution to the work of the Inquiry. She will be sorely missed by all of us here at SCAI. Our thoughts are with Jane's family.

## Phase 8 evidence

On 19 September 2023, SCAI began its public hearings in relation to Phase 8 of its investigations. The focus of this case study is residential accommodation provided or used by the state between 1930 and 2014 to accommodate (a) young offenders under the age of 18 (and children and young persons under 18 awaiting trial) and (b) children and young persons under 18 in need of care and protection.

This accommodation was managed by a range of providers including local authorities, religious bodies, voluntary bodies, and the Scottish Prison Service.

The first part of the case study featured evidence from relevant experts, regulatory bodies, and inspectorates, as well as evidence from providers.

**Chapter 1 hearings**, relating to establishments run by the Scottish Prison Service, started on 31 October 2023 and ran until the end of the year. During this period, SCAI heard evidence in relation to a number of particular establishments run by the Scottish Prison Service. This included evidence from individuals who experienced abuse and from a range of other witnesses.

**Chapter 2 hearings**, focusing on establishments run by the De La Salle Brothers, including St Joseph's Tranent, St Ninian's Gartmore, Springboig St John's, St Mungo's Mauchline, and St Mary's Kenmure, Bishopbriggs, ran from 9 to 26 January 2024.

**Chapter 3 hearings**, focusing on Dundee establishments including Balgowan, Burnside, and Balgay/Parkview, ran from 13 to 23 February.

**Chapter 4 hearings**, focusing on Larchgrove in Glasgow and Kerelaw in Ayrshire, ran from 18 March to 12 April.

**Chapter 5 hearings**, focusing on establishments for the residential care of children run by CrossReach, began on 23 April.

**Chapter 6**, examining Dr Guthrie's Schools, Edinburgh, and Loaningdale School, Biggar, began on 28 May.

Transcripts will be made available on the SCAI website in due course.

This is a substantial case study, with hearings expected to continue throughout 2024.

## Phase 9 announcement

On 30 November, SCAI announced its next phase of public hearings (Phase 9) concerning the provision of residential care in establishments for children and young people with long-term healthcare needs, additional support needs, and disabilities.

It is expected that public hearings will commence in spring 2025.

Investigation of this category of establishments has been ongoing throughout the life of the Inquiry and relevant statements have already been provided by applicants.

A range of organisations were involved in the provision of such residential accommodation including the National Health Service, local authorities, and voluntary and private providers. The provision of residential care by the institutions listed below are being considered as part of the case study.

### Algrade Trust

Children's Home, Humber

### The Donaldson Trust

Donaldson's School for Deaf Children, Edinburgh

### Harmeny Education Trust & Save the Children

Harmeny School, Balerno (Save the Children ran the school prior to the Harmeny Education Trust)

### NHS Dumfries & Galloway

Ladyfield West Children's Hospital, Dumfries  
Ladyfield East Unit, Crichton Royal Hospital, Dumfries  
Hannahfield Hall Unit, Crichton Royal Hospital, Dumfries  
Ladyfield West Unit, Crichton Royal Hospital, Dumfries  
Eskdale House Unit, Crichton Royal Hospital, Dumfries

### NHS Greater Glasgow & Clyde, and East Dunbartonshire Council

Lennox Castle Hospital, Lennoxtown, Glasgow

### Fife Council

Ovenstone Residential School, Pittenweem  
Melville House, Cupar  
Linwood Hall Children's Home, Leven

### Royal Blind

Royal Blind School, Edinburgh

### NHS Forth Valley

Royal Scottish National Hospital, Larbert

### Independent providers

Starley Hall School, Burntisland  
Monken Hadley School/Corsbie Hall School/  
Woodlands School, Newton Stewart

### Seamab

Lendrick Muir School, Rumbling Bridge

### Congregation of the Poor Servants of the Mother of God

St Mary's Balnakeil, Galashiels

### Daughters of Charity of St Vincent de Paul

St Vincent's School for the Deaf and Blind,  
Tollcross, Glasgow  
St Joseph's Hospital, Rosewell

### Our Lady of Charity of the Good Shepherd


Woodfield Ladymary School, Colinton, Edinburgh

The Inquiry's wide-ranging Terms of Reference include requiring SCAI to investigate the provision of residential care for children in healthcare establishments providing long-term care as well as similar establishments. Phase 9 will, accordingly, examine the provision of residential care for children and young people who had long-term healthcare needs, additional support needs, disabilities, or a combination of those needs.

A number of people have already come forward, but SCAI would encourage anyone with relevant information to get in touch with the Inquiry's Witness Support Team as soon as possible.

## Contact

Individuals can contact the Inquiry's Witness Support Team:

-  **by phone** on **0800 0929 300**
-  **by email** at **talktous@childabuseinquiry.scot**
-  **by post** at **PO Box 24202 Edinburgh EH3 1JN**
-  **British Sign Language (BSL)** users can contact the Inquiry direct through its online sign language interpreter at **www.ContactScotland-bsl.org**



Deaf or hard-of-hearing people can contact the Inquiry using the **Relay UK** service – just download the app onto your smartphone, tablet, or computer.



The **new SCAI website** includes a range of features to improve accessibility such as 'Recite Me' and a series of short BSL videos.



Regular updates will be provided on SCAI's website **www.childabuseinquiry.scot** and via the Inquiry's X (formerly Twitter) account **@ScottishCAI**

TALK  
TO US

## New SCAI website

In summer 2023, SCAI launched its new website to improve accessibility for users.

The **website** has been updated to make it easier to access information, with clear signposting and easy-to-use search functions.

The web text has also been changed to a clearer, larger font, and the brand colours toned to increase visibility.

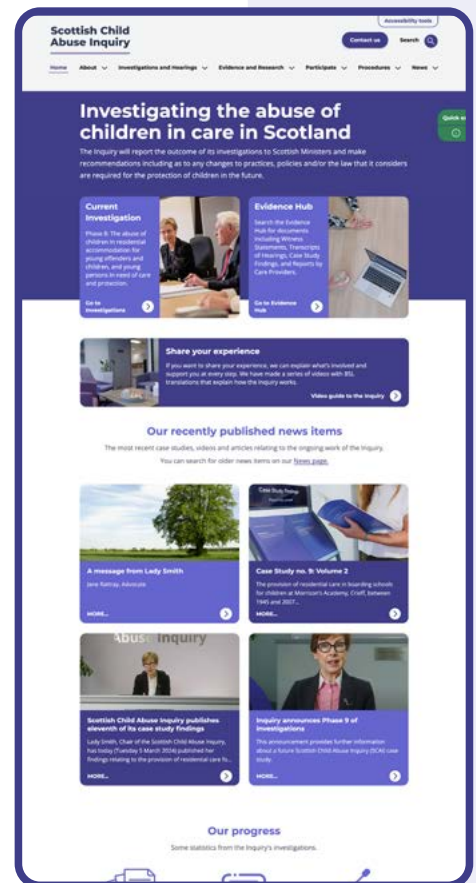
The website includes a range of features to improve accessibility such as 'Recite Me' – an assistive toolbar that allows visitors to customise content so that they can consume it in ways that work best for them.

The 'Recite Me' toolbar (found at the top of each webpage) features:

- a screen reader that reads website text aloud
- translation into over 100 languages, including 65 text-to-speech voices
- customisation options for neurodivergent users. Users are able to customise the website's colour scheme as well as the text, font style, size, background, colour, and spacing
- reading aids including a ruler, screen mask, magnifier, margins, and a dictionary

The new website can still be found at the same address:

**[www.childabuseinquiry.scot](http://www.childabuseinquiry.scot)**



What is a public inquiry?

Introduction to the Scottish Child Abuse Inquiry



How to contact us

Applying to give evidence

## BSL video series

SCAI has created a **video guide** to the Inquiry, which is now available on the website.

The series of short videos has been produced to help you understand how the Inquiry works. The videos cover the basics about SCAI, how to contact the Witness Support Team, how to give evidence, and what happens when you attend a public hearing.

The video series has captions and BSL interpretation. The BSL video guide can be found on the Inquiry website:

**[www.childabuseinquiry.scot/video-guide](http://www.childabuseinquiry.scot/video-guide)**

## Easy read guide

SCAI has created an **easy read information booklet**, which is now available on the website. This booklet uses simple language and contains illustrations and images to help people understand the information more easily.

View and download the easy read information booklet on the Inquiry website: **[www.childabuseinquiry.scot/accessibility-support](http://www.childabuseinquiry.scot/accessibility-support)**

Hard copies of this information booklet are also available upon request by emailing **[SCAI@3x1.com](mailto:SCAI@3x1.com)**



Find out more about SCAI on the website: **[www.childabuseinquiry.scot](http://www.childabuseinquiry.scot)**

**TALK  
TO US**

## Morrison's Academy

In March 2024, Lady Smith published her findings relating to the provision of residential care for children at Morrison's Academy, Crieff, between 1945 and 2007.

She concludes that children were abused at Morrison's. The abuse was primarily physical and emotional, but there was also sexual abuse.

Hearings took place between 24 March 2021 and 12 May 2021, during which Lady Smith heard oral evidence and statements were also read in to evidence. Since hearings concluded, further evidence in the form of signed statements has been provided which has been considered and taken into account in the preparation of these findings.

Factors such as the excessive and inappropriate use of corporal punishment; poorly run and managed boarding houses; and a strong tradition and culture of not reporting abuse were amongst those that resulted in children being abused and deprived of what could have been – and should have been – positive childhood experiences of boarding at the school.

A video from Lady Smith summarising her findings can be viewed [here](#) and the full report can be read on the Inquiry's website [here](#).

Morrison's was one of the schools investigated in the boarding schools case study and explored in evidence in the course of public hearings. Lady Smith's findings in relation to other boarding schools in the case study will follow, with the Gordonstoun case study findings due to be published very soon.

## SCAI website

**Q** How can I access the new SCAI website?

**A** The new website can be found at the same web address: [www.childabuseinquiry.scot](http://www.childabuseinquiry.scot)

## SCAI hearings

**Q** How can I keep up with Inquiry hearings?

**A** You can keep up to date with what is happening at SCAI on the Inquiry website: [www.childabuseinquiry.scot](http://www.childabuseinquiry.scot) and via X (formerly Twitter), [@ScottishCAI](https://twitter.com/ScottishCAI)

Full transcripts of evidence taken during hearings are also available on the website. These are published as soon as is practicable after each hearing.

## SCAI evidence

**Q** How does SCAI gather evidence?

**A** SCAI gathers evidence by obtaining witness statements, records, and other documents. SCAI also hears evidence at public hearings.

**Q** I gave evidence to SCAI in relation to Phase 8 of its investigations. Why have I not been asked to give evidence at public hearings?

**A** A significant number of applicants have provided statements to the Inquiry – all of which will be considered as part of this case study.

All statements are valuable evidence – but not everyone who has given a witness statement to SCAI will be asked to give evidence at public hearings. Some will have relevant parts of their statement read in to the hearings. Some will be asked to give evidence at the public hearings to expand on their written statements.

Due to the size of the case study, there will be applicants who are not asked to give evidence at public hearings or have their statements read in. For some, their signed witness statement will be the whole of their evidence to SCAI.

All evidence is important to SCAI, and all signed witness statements will be carefully considered and evaluated in the same way as all other evidence. This is standard practice in SCAI's investigations.

SCAI is very grateful to all those who have given evidence.

TALK  
TO US

## Contact

Individuals can contact the Inquiry's Witness Support Team:

**by phone** on **0800 0929 300**

**by email** at [talktous@childabuseinquiry.scot](mailto:talktous@childabuseinquiry.scot)

**by post** at **PO Box 24202**  
**Edinburgh EH3 1JN**

**British Sign Language (BSL)** users can contact the Inquiry direct through its online sign language interpreter at [www.ContactScotland-bsl.org](http://www.ContactScotland-bsl.org)

Deaf or hard-of-hearing people can contact the Inquiry using the **Relay UK** service – just download the app onto your smartphone, tablet, or computer.

The **new SCAI website** includes a range of features to improve accessibility such as 'Recite Me' and a series of short BSL videos.

Regular updates will be provided on SCAI's website [www.childabuseinquiry.scot](http://www.childabuseinquiry.scot) and via the Inquiry's X (formerly Twitter) account [@ScottishCAI](https://twitter.com/ScottishCAI)